



## **KNCTEK GPS RF Active Antenna Module KRS-1823 Specification**

Version 1.0  
2008/03/17

This document contains information highly confidential to KNCTEK Company LTD (KNCTEK). It is provided for the sole purpose of the business discussions between supplier and KNCTEK and is covered under the terms of the applicable Non-Disclosure Agreements. Disclosure of this information to other parties is prohibited without the written consent of KNCTEK.

**KNCTEK Company LTD.**

**14F-14, Byucksan Digital Valley 5<sup>th</sup>, 60-73,**

**Gasangdong, Geumcheon-gu**

**SEOUL, KOREA**

**TEL: 82-2-839-5701**

**FAX: 82-2-830-5703**

**E-Mail: [sales@knctek.com](mailto:sales@knctek.com)**

**<http://www.knctek.com>**



## KRS-1823 Specification

REVISION HISTORY.....	3
INTRODUCTION.....	4
PRODUCT FEATURES .....	4
PRODUCT ORDERING INFORMATION .....	4
PRODUCT PICTURE .....	5
KRS-1823 SYSTEM BLOCK DIAGRAM .....	5
TECHNICAL SPECIFICATION .....	6
MECHANICAL LAYOUT .....	7
I/O PIN ASSIGNMENT .....	7
HARDWARE INTERFACE .....	8
PACKING SPECIFICATION .....	11
GPS RECEIVER USER'S TIP .....	12
CONTACT INFORMATION SECTION .....	13



## Revision History

1. 2008. 03. 17 : Initiated Version 1.0

# KRS-1823 Operational Manual

## INTRODUCTION

The **KRS-1823** is the newest generation of KNCTEK GPS RF Active Antenna Receiver module. The GPS RF Active Antenna receiver is powered by STA5620 which is fully RF front-end compatible with GPS L1 and the Galileo signals, and SMA661 of STMicroelectronics technology and KNCTEK proprietary of RF combination high technology that providing you more stable navigation data. The miniature design is the best choice to be embedded in a portable device like PND, PDA, Telematics and vehicle locator where you may use with variable GPS library into Base Band CPU. The excellent sensitivity of **KRS-1823** gets the great performance when going though the urban canyon and foliage environmental condition.

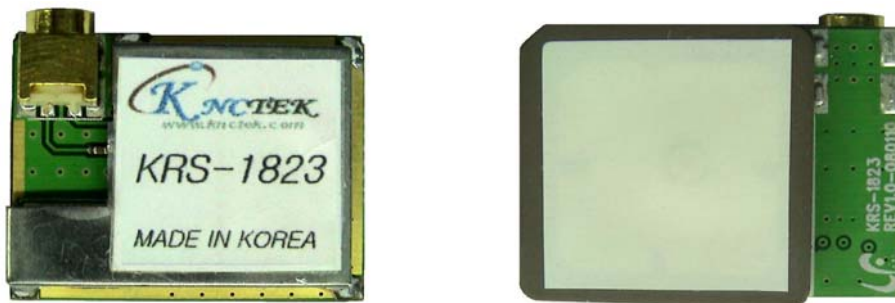
## PRODUCT FEATURES

- ◇ Applicable for Base band CPU using GPS library
- ◇ Small form factor 18 \* 23 \* 6mm(except MCX connector)
- ◇ Included Saw Filter, TCXO and MCX switching connector
- ◇ Galileo Ready GPS Module in RF Front End
- ◇ Excellent Sensitive for Urban Canyon and Foliage
- ◇ Automotive-grade GPS Solution
- ◇ LNA Gain Internally Regulated
- ◇ Low Power For Portable Designs
- ◇ On Chip Programmable PLL
- ◇ 2KV HBM ESD Protected
- ◇ Custom design available with bellows;
  - 13 x 13 x 4mm patch antenna
  - Omni-Directional Antenna type

## PRODUCT ORDERING INFORMATION

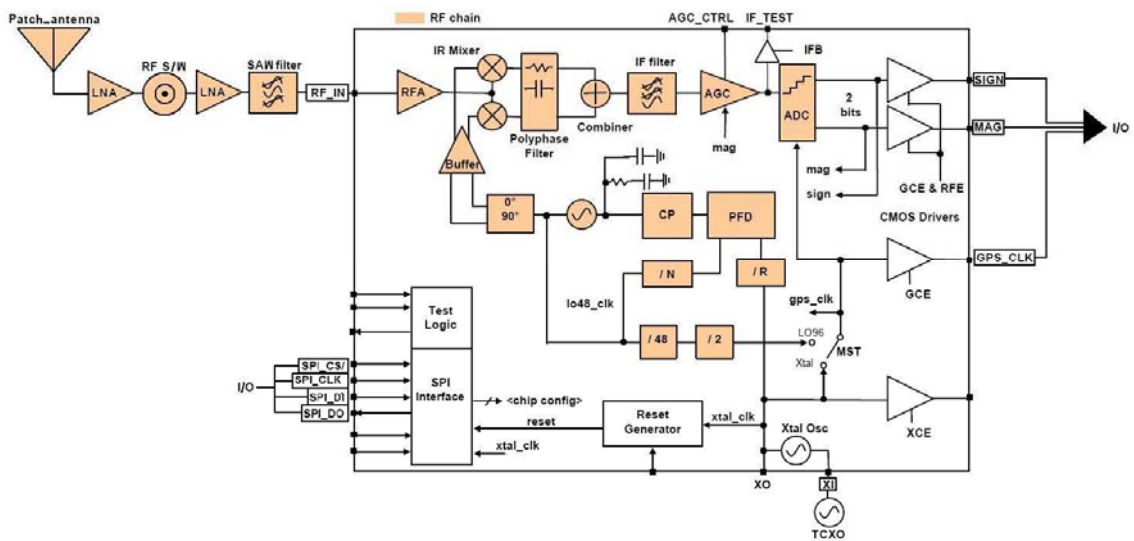
- ✧ KRS-1823A : Centrality CPU Application
- ✧ KRS-1823B : STM's Catesio CPU Application
- ✧ KRS-1823C : General GPS Library of Base Band including Teseo

## PRODUCT PICTURE



## KRS-1823 SYSTEM BLOCK DIAGRAM

The KRS-1823 consists of STMicroelectronics chipsets Technology, KNCTEK LNA and proprietary software. The system is described as follows.



**TECHNICAL SPECIFICATION****1. General Characteristics****1.1 General**

Frequency : L1, 1575.42MHz

Code : C/A Code, 1,023MHz chip rate

Channel : Based on the capability of Base Band CPU and/or GPS Library.

**1.2 Accuracy**

Position, Velocity and Altitude : Base on the capability of Base Band CPU and/or GPS Library.

**1.3 Interface****1.3.1 KRS-1823A(Centrality CPU Application) :**

VCC, GND & Using converted IF signal from ADC : Sign, Magnitude, GPS\_CLK

Interface Cable : 0.5pitch, 6pin, FPC cable

**1.3.2 KRS-1823B(Catesio CPU Application) :**

VCC, GND & Using converted IF signal from ADC: Sign, GPS\_CLK,

SPI\_CS, SPI\_CLK, SPI\_DI, SPI\_DO

Interface Cable : 0.5pitch, 9pin, FPC cable

**1.3.3 KRS-1823C(General GPS Library including Teseo)**

VCC, GND & Using converted IF signal from ADC : Sign, GPS\_CLK

Interface Cable : 0.5pitch, 6pin, FPC cable

**1.4 Antenna**

Internal Patch Antenna 18 X 18 X 4mm

or Omni Directional Antenna according to the Customer request.

**1.5 Performance**

Base on the capability of Base Band CPU and/or GPS Library.

**2. Electrical Characteristics**

Input Voltage : Nominal 3V  $\pm$ 5%, 2.85 ~ 3.15V Acceptable

Supply Current : Average 35mA @3V, Maximum 38mA

**3. Environment Characteristics**

Operating Temperature : -40 ~ 85°C

Storage temperature : -55 ~ 125°C

Humidity : 5% to 95% R.H. non-condensing @ +60°C

**4. IMDS & RoHs Compatible**

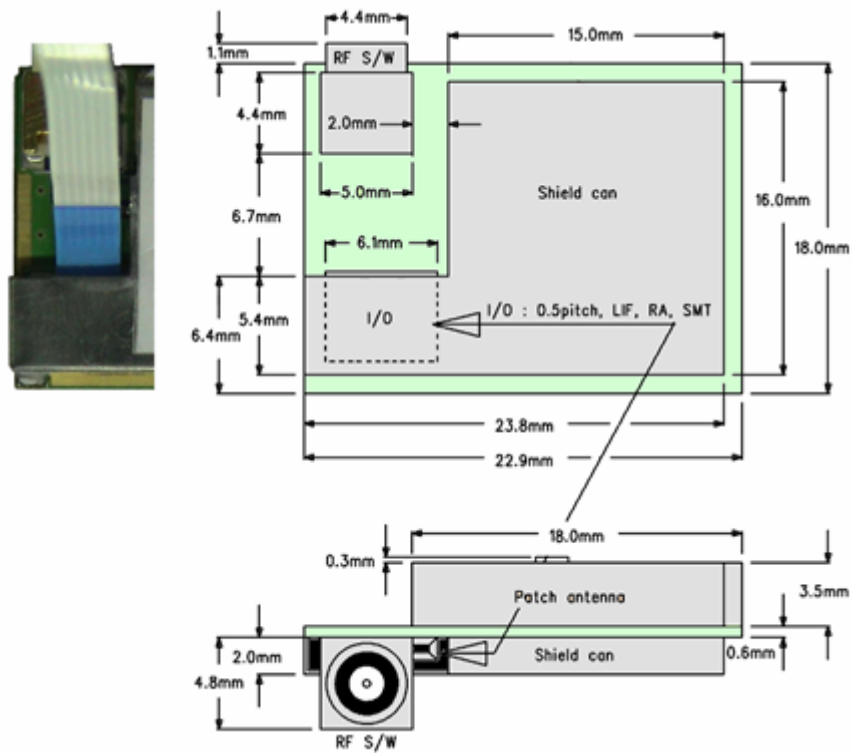
Fully accommodated to IMDS & RoHs.

## 5. Mechanical Characteristics

Dimension : 18 X 23 X 9.2mm

Weight : 8.75grams

## MECHANICAL LAYOUT



\* Mechanical Design to be suggested by ODM/OEM customer.

## I/O PIN\_ASSIGN

1.	+3.0V
2.	GND
3.	GPSCLK
4.	GND
5.	SIGN
6.	MAG

KRS-1823A

1.	+3.0V
2.	GND
3.	GPSCLK
4.	GND
5.	SIGN
6.	SPI_DI
7.	SPI_CLK
8.	SPI_CS
9.	SPI_DO

KRS-1823B

1.	+3.0V
2.	GND
3.	GPSCLK
4.	GND
5.	SIGN
6.	NC

KRS-1823C

## HARDWARE INTERFACE

### 1. KRS-1823A(Centrality CPU Application) :

#### Pin Description

PIN	SIGNAL NAME	I/O	DESCRIPTION	REMARK
1	+3.0V	P	DC Power Supply Voltage input	DC +3V $\pm$ 5%
2	GND	P	Ground	
3	GPSCLK	O	GPS Reference Clock	
4	GND	P	Ground	
5	SIGN	O	Sign Data	
6	MAG	O	Magnitude Data	

#### **+3.0V**

This is the main power supply for the Antenna Module. The power range is DC +3V  $\pm$ 5%.

#### **GND**

GND provides the ground for the Engine board. Connect all grounds.

#### **GPSCLK**

GPSCLK is converted by ADC. Provide to the baseband.16.367MHz

#### **SIGN**

SIGN is converted by ADC. Provide to the base band.

#### **MAG**

MAG(Magnitude) is converted by ADC. Provide to the base band.





2. KRS-1823B(STM' Catesio CPU Application) :

Pin Description

PIN	SIGNAL NAME	I/O	DESCRIPTION	REMARK
1	+3.0V	P	DC Power Supply Voltage input	DC +3V $\pm$ 5%
2	GND	P	Ground	
3	GPSCLK	O	GPS Reference Clock	
4	GND	P	Ground	
5	SIGN	O	Sign Data	
6	SPI_DI	I	SPI Data Input	
7	SPI_CLK	I	SPI Clock	
8	SPI_CS	I	SPI Chip Select	
9	SPI_DO	O	SPI Data Output	

**+3.0V**

This is the main power supply for the Antenna Module. The power range is DC +3V  $\pm$ 5%.

**GND**

GND provides the ground for the Engine board. Connect all grounds.

**GPSCLK**

GPSCLK is converted by ADC. Provide to the baseband.16.367MHz

**SIGN**

SIGN is converted by ADC. Provide to the base band.

**SPI\_DI**

Serial Parallel Interface Data Input

**SPI\_CLK**

Serial Parallel Interface Clock

**SPI\_CS**

Serial Parallel Interface Chip Select (Active Low)

**SPI\_DO**

Serial Parallel Interface Data Output

### 3. KRS-1823C(General GPS Library including Teseo) :

#### Pin Description

PIN	SIGNAL NAME	I/O	DESCRIPTION	REMARK
1	+3.0V	P	DC Power Supply Voltage input	DC +3V $\pm$ 5%
2	GND	P	Ground	
3	GPSCLK	O	GPS Reference Clock	
4	GND	P	Ground	
5	SIGN	O	Sign Data	
6	NC	-	Not connecting	

#### **+3.0V**

This is the main power supply for the Antenna Module. The power range is DC +3V  $\pm$ 5%.

#### **GND**

GND provides the ground for the Engine board. Connect all grounds.

#### **GPSCLK**

GPSCLK is converted by ADC. Provide to the baseband.16.367MHz

#### **SIGN**

SIGN is converted by ADC. Provide to the base band.

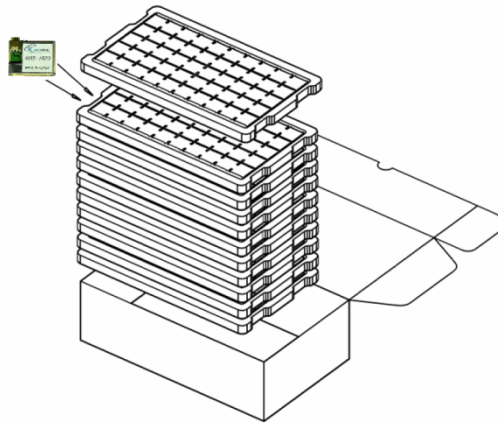
#### **NC**

Not connecting.

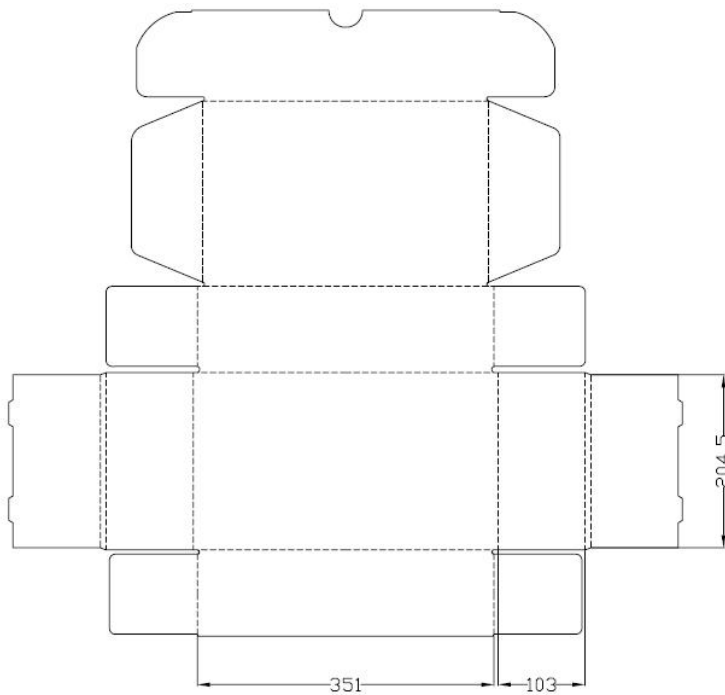
### Packing Information

#### 1. Tray Packing

TBD : To be determined



#### 2. Inner Box Packing



**GPS Receiver User's Tip**

1. GPS signal will be affected by weather and environment conditions, thus suggest to use the GPS receiver under less shielding environments to ensure GPS receiver has better receiving performance.
2. When GPS receiver is moving, it will prolong the time to fix the position, so suggest to wait for the satellite signals to be locked at a fixed point when first power-on the GPS receiver to ensure to lock the GPS signal at the shortest time.
3. The following situation will affect the GPS receiving performance:
  - a. Solar control filmed windows.
  - b. Metal shielded, such as umbrella, or in vehicle.
  - c. Among high buildings.
  - d. Under bridges or tunnels.
  - e. Under high voltage cables or near by radio wave sources, such as mobile phone base stations.
  - f. Bad or heavy cloudy weather.
4. If the satellite signals can not be locked or encounter receiving problem (while in the urban area), the following steps are suggested:
  - a. Move to another open space or reposition GPS receiver toward the direction with fewer blockages.
  - b. Move the GPS receiver away from the interference resources.
  - c. Wait until the weather condition is improved.

While a GPS with a backup battery, the GPS receiver can fix a position immediately at next power-on if the build-in backup battery is full-recharged.



## KRS-1823 Specification

### Contact Information Section

Contact : [sales@knctek.com](mailto:sales@knctek.com)

Web Site: [www.knctek.com](http://www.knctek.com)

Headquarter :

**14F-14, 60-73 Byucksan Digital Valley 5<sup>th</sup>,  
Gasang-dong, Geumcheon-gu  
SEOUL, KOREA  
TEL: 82-2-839-5701  
FAX: 82-2-830-5703**